



colorCONTROL ACS7000
Update Tool

Version 002.061.xxx

Instructions for software update

MICRO-EPSILON Eltrotec GmbH
Heinkelstraße 2

73066 Uhingen / Germany

Tel. +49 (0) 8542 / 168-0
Fax +49 (0) 8542 / 168-90
eltrotec@micro-epsilon.de
www.micro-epsilon.com

Softwarestand

002.061.xxx

Contents

1.	Preparation	5
2.	The Update	6
3.	Post Processing	7
3.1	Reset Web-browser Cache.....	7
3.2	Update Result	7
3.3	Restoring Controller Setups and Color Tables.....	7
3.3.1	Controller Setup	7
3.3.2	Color Table.....	7
4.	Possible Errors.....	7

1. Preparation

The software update requires operation of the controller in user level `Expert`.

➡ Please lock in as `Expert`, before attempting to update the system, see Operating Instructions, Chapter 5.3.2.

This update is only applicable to controllers with software version 001.055.180 or higher. For update from earlier versions please update your controller to 001.055.180/182 or 001.055.183 first.

When the controller is updated, all user settings may be lost.

➡ Save all setups onto an external PC before proceeding with the setup, see Operating Instructions, Chapter. 5.3.16.

➡ Save the files individually and restore again, if more than one setup is to be saved.

A list of all internal setups currently saved in the controller can be found in the `Infos` menu.

➡ If the color table is to be restored after the update, please save before on an external PC, see Operating Instructions, Chapter 5.3.16.

• It is recommended, to switch the controller to the factory settings before performing the update, see Operating Instructions, Chapter 5.9.

➡ Before starting the software update copy the programs `Update_Sensor.exe` and `SensorFinder.exe` as well as the software file `Farbsensor_U_002.061.xxx.meu` into the same directory.

2. The Update

The software update is performed by running the program Update_Sensor.exe.

After starting the program Update_Sensor.exe, see Fig. 1, the program automatically searches for connected devices. The controller IP address can also be set manually if the controller is not automatically detected.

- ➡ Check the connection by pressing the `Test Connection` button.
- ➡ To avoid inadvertently programming a wrong device, please check, if the controller type and serial number (type label) match.
- ➡ Select the update file (`Farbsensor_U_002.061.xxx.meu`).

A list of applicable updates will appear in the field below the file selection box. The software update is started by pressing the `Update` button. The progress of the process will be indicated in the `Status` line.

NOTICE

Do not interrupt in any case the power supply of the controller and the network connection during the update process.

> Permanent damage of the controller

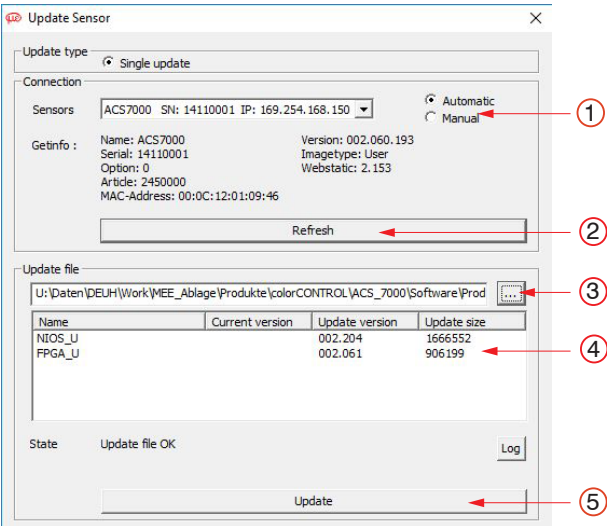


Fig. 1 update_sensor.exe - operation

①	Set the IP address manually if controller is not detected.
②	Run another sensor search.
③	Select update file.
④	Applicable update. Will be empty if controller is fully updated.
⑤	Start update.

If the update process is complete, it will be indicated by a pop-up window, see Fig. 2. and the controller restarts automatically.

- ➡ Switch off the controller for at least ten seconds.

Now you can close the program Update-Sensor.exe or let it open for the update of another controller.

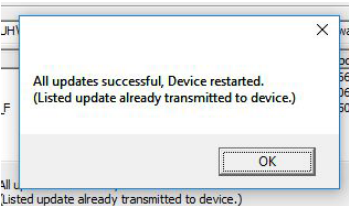


Fig. 2 Display of successful update via pop-up window

3. Post Processing

3.1 Reset Web-browser Cache

Since the software update modifies certain parts of the controller web-interface it is recommended to empty the browser cache of the web browser you are using.

So possible arising display errors can be avoided.

You will find further informations in the manual respectively in the online help of your used browser. Resetting of the browser Cache functions differently for each browser (Firefox, Chrome, Safari, Internet Explorer) and is not described therefore in the Operating Instructions of the ACS7000.

3.2 Update Result

The success of the update can be verified on the controller web page in the **Infos** menu.

After successful update the following information for the version of the user image is shown:

①	Software Version:	002.061.xxx.xxx
②	Factory Image:	1.18x or 2.19x
③	User Image:	2.2xx

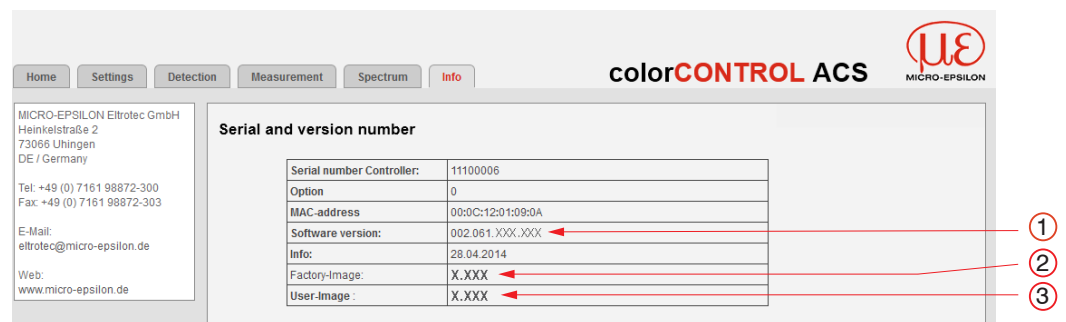


Fig. 3 Checking for success of the update - software version installed on the controller

3.3 Restoring Controller Setups and Color Tables

3.3.1 Controller Setup

➤ Please restore setups from an external PC as described in the Operating Instructions, Chapter 5.3.16.

3.3.2 Color Table

➤ Please restore the color table from an external PC as described in the Operating Instructions, Chapter 5.3.16.

4. Possible Errors

The following errors can be encountered when updating the software:

Problem	Solution
Wrong user level	➤ Log in as Expert .
Invalid software file	➤ Check software version on controller. If this is identically with the update version or newer, then an update is not possible.



MICRO-EPSILON Eltrotec GmbH
Heinkelstraße 2 · 73066 Uhingen / Germany
Tel. +49 (0) 7161 / 98872-300 · Fax +49 (0) 7161 / 98872-303
eltrotec@micro-epsilon.de · www.micro-epsilon.com

X9751252.01-A031127MSC

